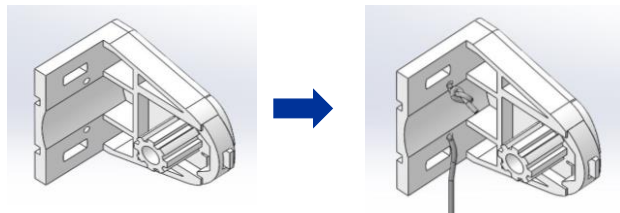
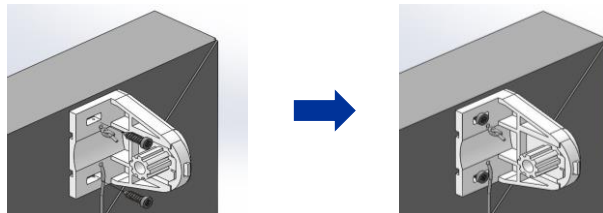


MINIRULOODE PAIGALDAMINE

**SAMM 1 - LÕIKA PARAJA PIKKUSEGA KÜLJETAMIILID
NING SEO NEED KLAMBRITE KÜLGE**



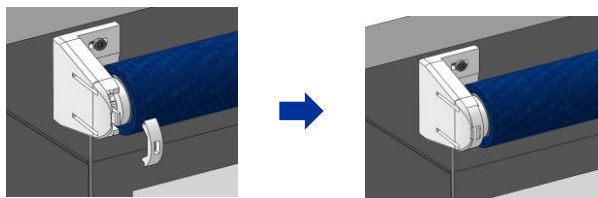
**SAMM 2 - KINNITA KLAMBRID VASTAVALT RULOO
LAIUSELE JA KÕRGUSELE**



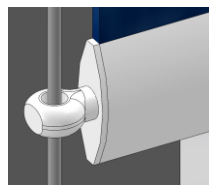
SAMM 3 - LÜKKA RULOO KLAMBRITE VAHELE



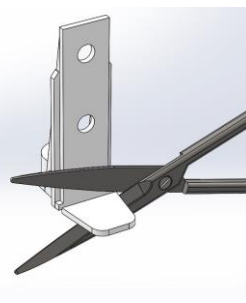
SAMM 4 - KINNITA LUKUSTID



SAMM 5 - PANE KÜLGTAMIIL LÄBI TAMIILIJUHIKU

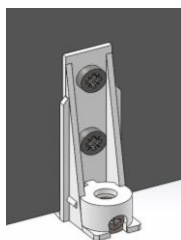


SAMM 6 - KINNITA ALAKINNITUS JA FIKSEERI KÜLGTAMIIL

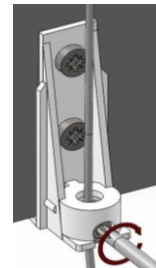


KUI PUUDUB VÕIMALUS
KINNITADA AKNARAAMI
ALASERVA, SIIS LÕIKA
ALTKINNITUSELT PILDIL
NÄIDATUD OSA

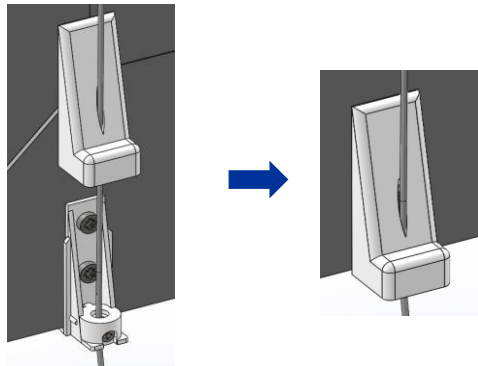
6.1 KINNITA ALAKINNITUS



**6.2 PINGUTA TAMIIL JA
SEEJÄREL FIKSEERI**



SAMM 7 - LÜKKA KATE ALAKINNITUSE PEALE



TULEMUS

